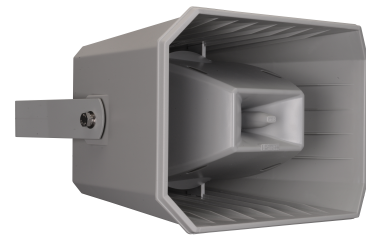


MPLT62-G

Powerful two-way long throw horn



The MPLT62-G is two-way long throw horn 100 volt high quality music projector. It has 62 watts rated power handling RMS at 100 volt and has transformer taps at 62 – 32 – 16 – 8 watts. Its long throw output performance brings quality sound over long distances and in wide areas with both music and speech. The two-way characteristic makes your music still sound natural where the horn shape housing makes sure you cover a big distance.

Thanks to the well-considered coverage range, high sensitivity, high output, low distortion and extended frequency response, this MPLT62-G horn loaded loudspeaker is ideal for voice, music or even alarm signals.

It can be used in outdoor applications such as recreational facilities, schools, parking facilities, as well as large indoor applications such as sports centers, airports, exhibition halls...

The housing of the MPLT62-G is made of high impact ABS. It has a coated 6.5" HD woofer and 1" horn driver. The bracket is made of coated aluminium which makes the loudspeaker fully weatherproof (IP66) and is a guarantee against corrosion!

The MPLT62-G loudspeaker can be painted in any colour.

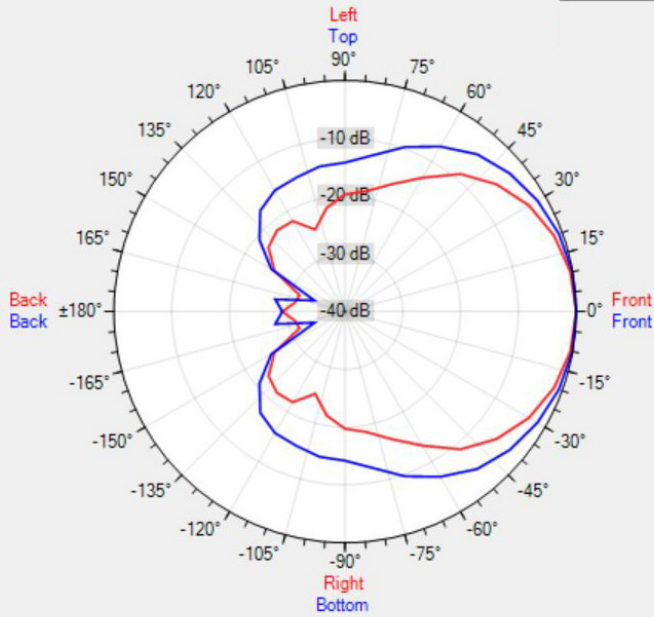
TECHNICAL SPECIFICATIONS

height in mm	250	width in mm	360
depth in mm	290	loudspeaker system	2-way
woofer size in inch	6.5	tweeter size in inch	1
mounting system	U-bracket	colour	grey
100V transformer power taps in watts	62 - 32 - 16 - 8	SPL 1W/1m in dB	98
max SPL 1m in dB	115	frequency response in Hz	75 - 18 k
main construction material	ABS plastic	IP rating	66
applicable low impedance	no	applicable in 100V	yes
Horizontal dispersion angle 1000 Hz	105°	Vertical dispersion angle 1000 Hz	140°
closest RAL colour (subject to deviations)	RAL9006	Net weight product (kg)	3.10

POLAR PLOTS

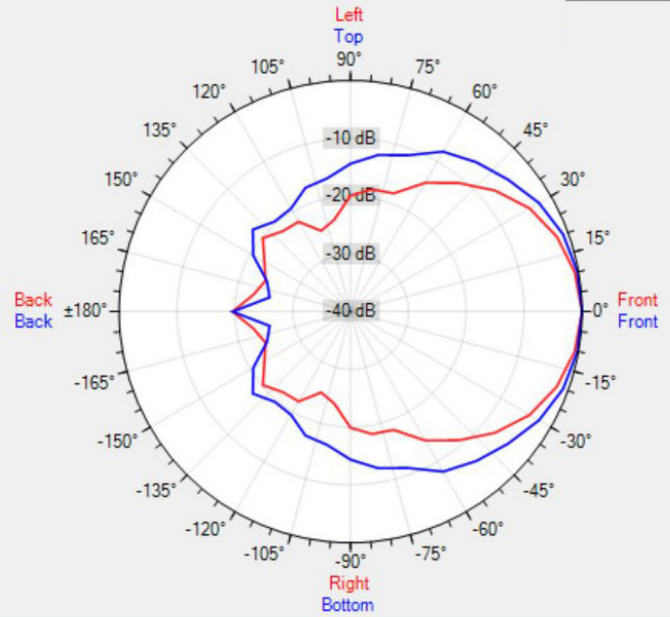
Data Shown: MPLT62 (Apart Audio)
 Display Parameters: Frequency: 1000Hz (1/24th Octave)

Horizontal
 Vertical



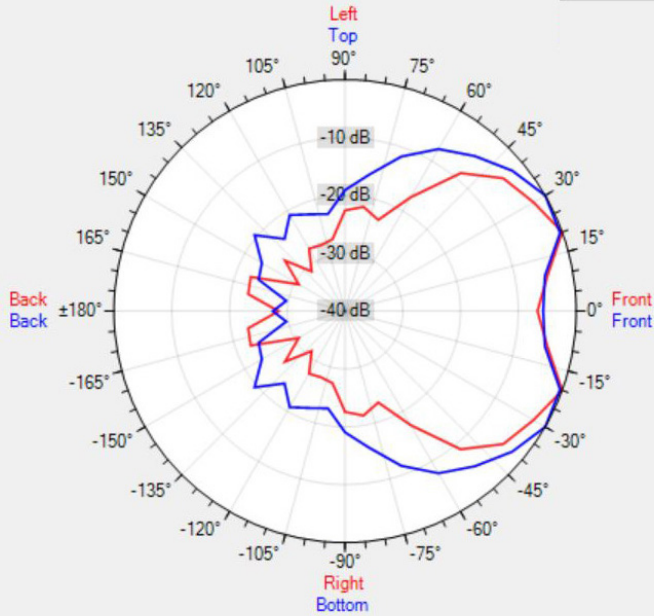
Data Shown: MPLT62 (Apart Audio)
 Display Parameters: Frequency: 2000Hz (1/24th Octave)

Horizontal
 Vertical



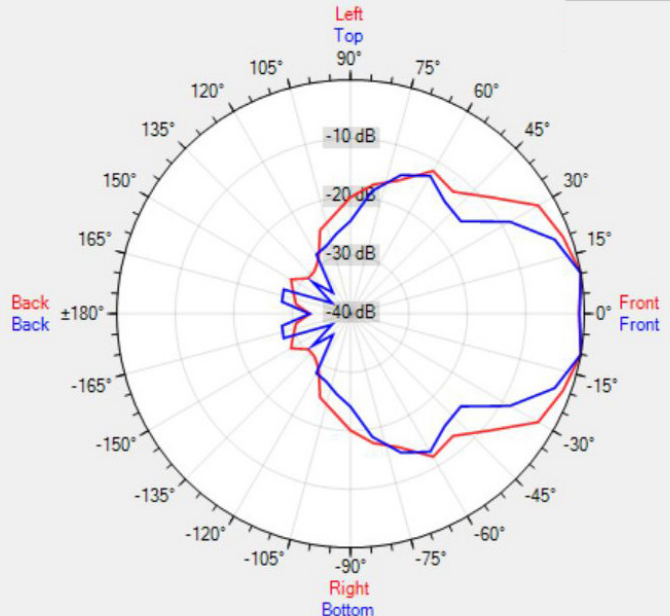
Data Shown: MPLT62 (Apart Audio)
 Display Parameters: Frequency: 4000Hz (1/24th Octave)

Horizontal
 Vertical



Data Shown: MPLT62 (Apart Audio)
 Display Parameters: Frequency: 8000Hz (1/24th Octave)

Horizontal
 Vertical



[MORE PICTURES](#)

