

# MASK4CT-BL

4.25" design two-way loudspeaker with Clickmount system



The MASK4CT has a unique design and delivers a crystal clear sound for all music applications. The MASK4CT can be used as a 70V/100V speaker with power tapping on 20 - 10 - 5 - 2.5 watts in 100V or as a low impedance 16 Ohm speaker. This results in a versatile speaker that can be used in any location and any application. The cabinet is made of high quality enforced PP4 ABS, with an aluminium grill. The design of the MASK4CT ensures high quality and long lasting performance in indoor and outdoor use, even under extreme weather conditions. The MASK4CT has a powerful 4.25" coated paper cone woofer and a 1" silk dome tweeter which results in a high SPL and extremely low distortion.

This ensures an unprecedented clarity over the whole frequency spectrum. The built-in Apart 3-step protection and the high-quality components make the MASK4CT an ultra-reliable, fail safe loudspeaker even at high power loads. Thanks to the revolutionary design of the ClickMount bracket, the MASK4CT is without a doubt the fastest and most installer friendly loudspeaker to-date. The pre-defined clicks on the Clickmount ensure a perfect alignment for every loudspeaker. With the discrete cable management system, integrated spirit level and in/out connectors, the full cabling is done on the bracket. To complete the installation simply click the loudspeaker on the ClickMount!

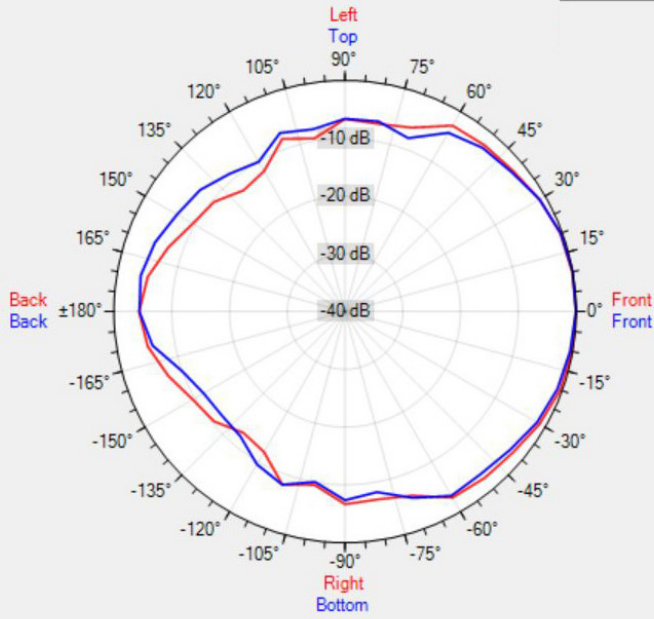
## TECHNICAL SPECIFICATIONS

|  |                            |                                      |                   |
|--|----------------------------|--------------------------------------|-------------------|
| height in mm                               | 238                        | width in mm                          | 144               |
| depth in mm                                | 144                        | loudspeaker system                   | 2-way             |
| woofer size in inch                        | 4,25                       | woofer cone material                 | coated paper      |
| tweeter size in inch                       | 1                          | mounting system                      | clickmount        |
| colour                                     | black / white              | 100V transformer power taps in watts | 20 - 10 - 5 - 2.5 |
| 70V transformer power taps in watts        | 20 - 10 - 5 - 2.5 - 1.25   | impedance (ohms)                     | 16                |
| low impedance dynamic power in watts       | 70                         | low impedance RMS power in watts     | 50                |
| SPL 1W/1m in dB                            | 89                         | max SPL 1m in dB                     | 104               |
| frequency response in Hz                   | 80 - 20k                   | main construction material           | ABS plastic       |
| grille main material                       | aluminium                  | IP rating                            |                   |
| Horizontal dispersion angle 1000 Hz        | 180°                       | Vertical dispersion angle 1000 Hz    | 180°              |
| closest RAL colour (subject to deviations) | RAL9016 (W) / RAL9011 (BL) | Net weight product (kg)              | 1.85              |

**POLAR PLOTS**

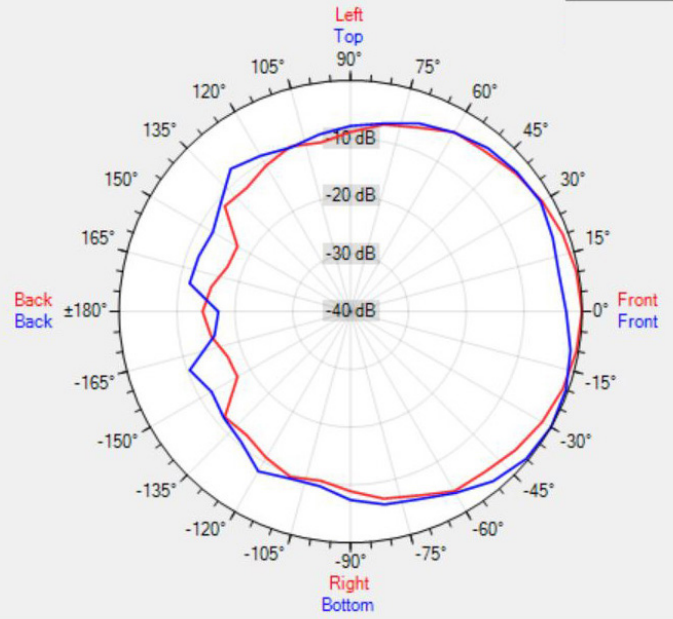
Data Shown: MASK4CT (Apart Audio)  
Display Parameters: Frequency: 1000Hz (1/24th Octave)

Horizontal  
Vertical



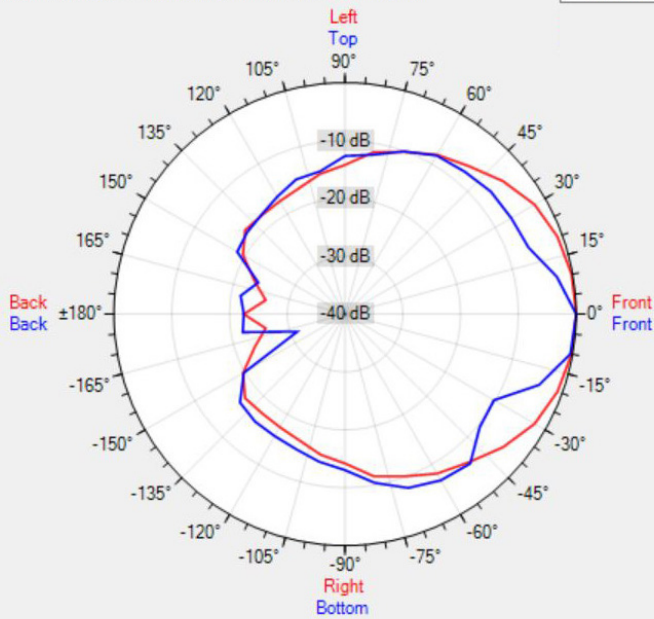
Data Shown: MASK4CT (Apart Audio)  
Display Parameters: Frequency: 2000Hz (1/24th Octave)

Horizontal  
Vertical



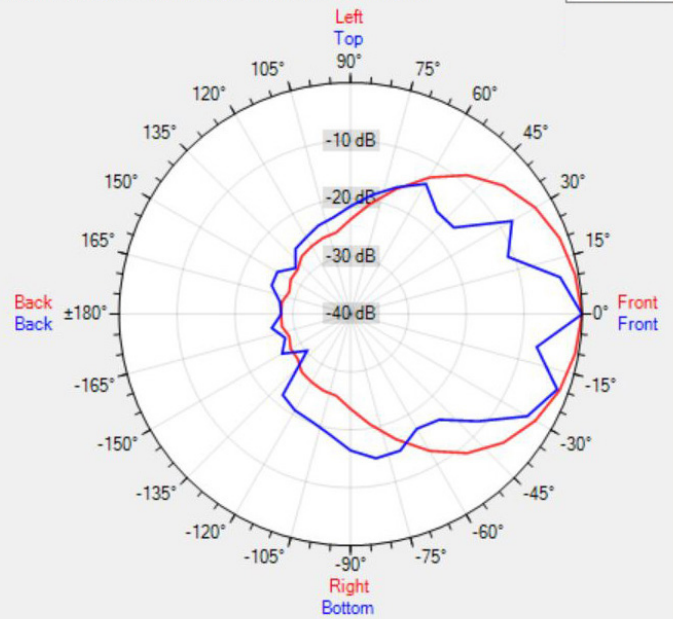
Data Shown: MASK4CT (Apart Audio)  
Display Parameters: Frequency: 4000Hz (1/24th Octave)

Horizontal  
Vertical

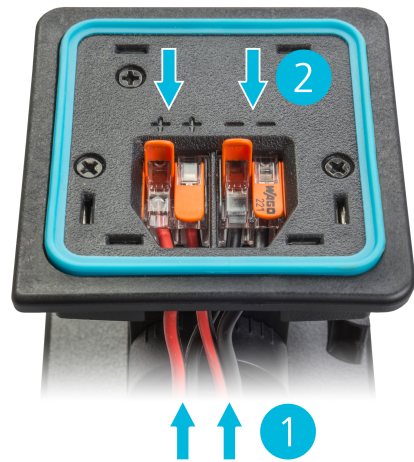


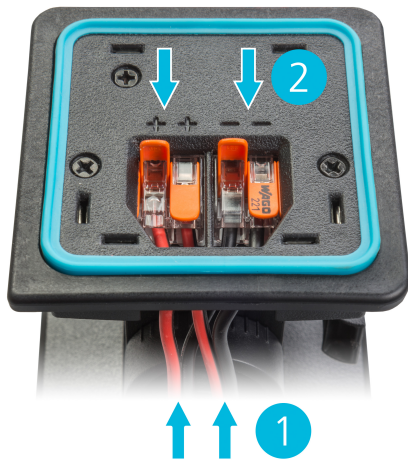
Data Shown: MASK4CT (Apart Audio)  
Display Parameters: Frequency: 8000Hz (1/24th Octave)

Horizontal  
Vertical



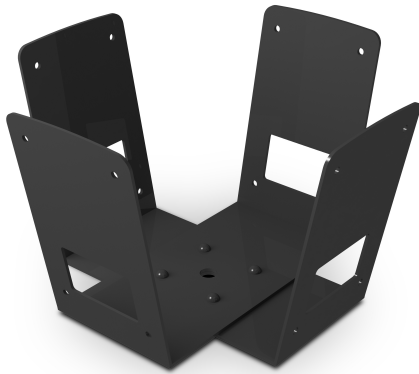
MORE PICTURES







ACCESSORIES



**MASKCW-BL**

Double V-shaped cluster bracket for MASK4C(T)-BL/MASK6C(T)-B



**MASKCV-BL**

V-shaped 2-way cluster bracket for MASK4C(T)-BL/MASK6C(T)-BL



**MASKCL-BL**

L-shaped side bracket for MASK4C(T)-BL / MASK6C(T)-BL