

X212AF

2x 12" THREE-WAY ACTIVE LINE
ARRAY SPEAKER SYSTEM

XCELLENCE



The X212AF is the flagship of the Xcellence series and the epitome of audio perfection performance. Breakthrough technologies, cutting-edge acoustic design, the highest quality, precision-engineered, in-built DSP with F.I.R. filters, tailor-made components and materials and Dante networking (available under request).

KEY FEATURES

TRANSDUCER TECHNOLOGY

Three-way line array active speaker system composed by two direct radiating 3-inch voice coil, neodymium magnet 12" loudspeakers, four 1.5-inch voice coil, neodymium magnet 6" loudspeakers mounted on two mid frequency phase plugs and two 3-inch voice coil, titanium diaphragm, neodymium magnet compression drivers coupled to a 100° x 8° exclusive high performance waveguide.

AMPLIFICATION

4000 W 3rd generation Class D built-in amplifier controlled by a dedicated multichannel DSP.

90% efficiency amplifier SMPS (switching mode power supply), allowing maximum power delivery with minimum consumption in an extremely low-weight and reduced size.

Rear connections and control panel with touch screen to display the different settings, presets, volume and adjustments done by the user.

Exclusive and unique Overvoltage Protection which continuously monitors line voltage and instantly disconnects the system if the line voltage exceeds the maximum permissible level.

Automatic low power consumption mode (EcoMode) available, when no signal present at the input.

Double PowerCon (input link)

Maximum 1 cabinet linked.

DSP & CONTROL

Internal DSP with all necessary signal processing (crossovers, EQ's, delay, limiters, gain control, mute) as well as several useful presets to adjust the X212AF to different requirements.

Advanced signal processing using F.I.R. (Finite Impulse Response) filters.

Automatic input overload prevention circuit: prevents overloading the A/D converter input.

Double Ethernet connection with integrated Ethernet switch. Wireless control available through external hardware CWK-D: the system can be monitored from any spot in the room.

New DSPstudio® control software capable of adjusting and setting-up even the finest details and monitoring key parameters of the amplifier: input and output levels, limiter engagement, amplifier temperature and status, and network connection status.

DESIGN & ACCESSORIES

Several accessories allow easy flying and stacking.

Connectors are placed on an inclined plane to increase protection against rain or moisture.

Ergonomic handles for an easy and comfortable transport.

1.5 mm speaker grilles with grey micro-foam cloth, exclusively designed with an optimum perforation gradient and attractive appearance.

Multilayer baltic birch plywood cabinet with Polyurea® coating, offering maximum reliability and strength for touring as well as for high demanding applications.

X212AF

2x12" THREE-WAY ACTIVE LINE ARRAY SPEAKER SYSTEM

XCELLENCE



DSP STUDIO CONTROL APP
FOR IPAD & WINDOWS



WITH CWK-D



EXCLUSIVE HIGH PERFORMANCE WAVEGUIDE



EXCLUSIVE MID PHASE PLUG



LIGHT NEODYMIUM COMPONENTS



> 250 V OVERVOLTAGE PROTECTION



MULTIPLE PRESETS AVAILABLE



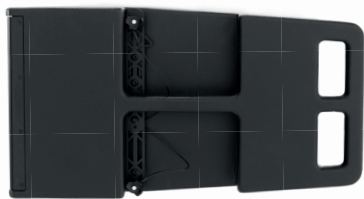
HIGH RESISTANT POLYUREA® PAINT



ACCESSORIES FOR EASY INSTALLATIONS

TECHNICAL FEATURES

Amplifier (program power)	2000 W (LF) + 1000 W (MF) + 1000 W (HF) Class D Tri-amplified						
Input sensitivity	8 dBu – 1.94 V						
Input Impedance	20 kΩ Balanced						
Maximum input level	20 dBu						
Mains	Universal Switch Mode Power Supply 85-265 V / 45-65 Hz						
Average current draw	3.7 A (Heavy duty musical program)						
SPL (1 m)	141 dB continuous musical program, 144 dB peak						
Built-in DSP	64-bit processing unit. Includes factory presets						
AD/DA converters	24 bit – 48 kHz						
Standby mode consumption	< 5 W						
Adjustable delay line	118 ms / 40 m						
Crossover frequency	200 Hz / 1 kHz						
Frequency response (-10 dB)	42 Hz – 18 kHz						
Components	<table border="0"> <tr> <td>LF</td> <td>2x 12" neodymium woofers (3" voice coil)</td> </tr> <tr> <td>MF</td> <td>4x 6" neodymium woofers (1.5" voice coil)</td> </tr> <tr> <td>HF</td> <td>2x 3" titanium diaphragm, neodymium magnet compression drivers</td> </tr> </table>	LF	2x 12" neodymium woofers (3" voice coil)	MF	4x 6" neodymium woofers (1.5" voice coil)	HF	2x 3" titanium diaphragm, neodymium magnet compression drivers
LF	2x 12" neodymium woofers (3" voice coil)						
MF	4x 6" neodymium woofers (1.5" voice coil)						
HF	2x 3" titanium diaphragm, neodymium magnet compression drivers						
Directivity (HxV)	100° x 8°						
Directivity factor (Q)	64						
Directivity index (DI)	18 dB						
Weight	64.6 kg						
Dimensions (HxWxD)	372 x 1100 x 657 mm						
Finish	Multilayer baltic birch plywood with high resistant black Polyurea® coating						
Grille	1.5 mm steel with grey micro-foam cloth						
Rigging	Stainless-steel black painted integrated rigging bars						
Connectors	1x XLR input / 1x XLR link / 1x AC PowerCon® input / 1x AC PowerCon® link / 1 x EtherCon® RJ45 input / 1 x EtherCon® RJ45 link						



SIDE VIEW



FRONTAL VIEW WITHOUT GRILLES



TOP VIEW



REAR VIEW

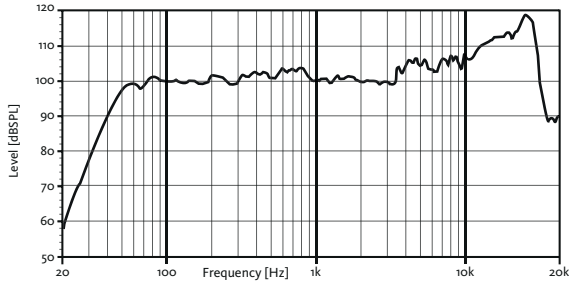
X212AF

2x12" THREE-WAY ACTIVE LINE
ARRAY SPEAKER SYSTEM

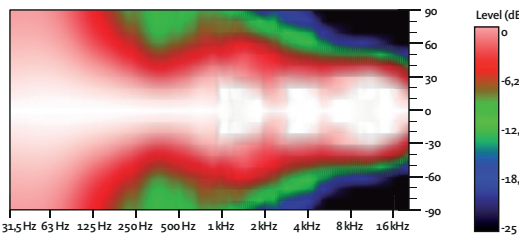
XCELLENCE



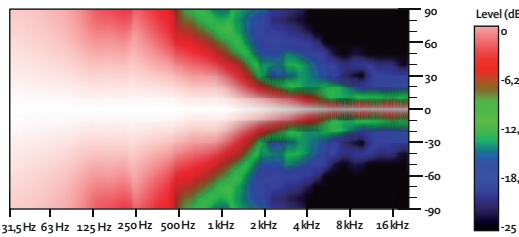
FREQUENCY RESPONSE 1w/1m (HP60_FLAT PRESET) ONE CABINET



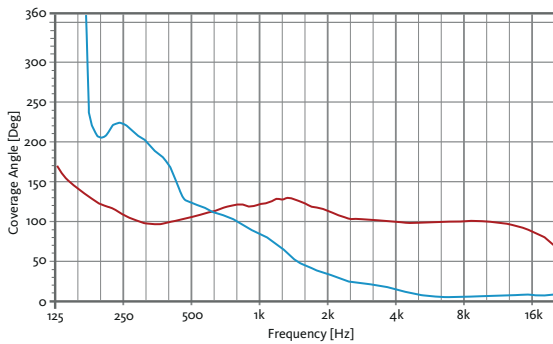
HORIZONTAL COVERAGE



VERTICAL COVERAGE

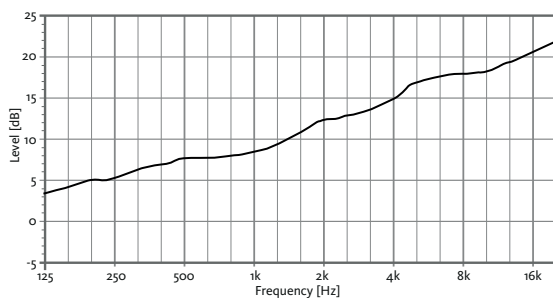


HORIZONTAL & VERTICAL BEAMWIDTH (-6dB point)

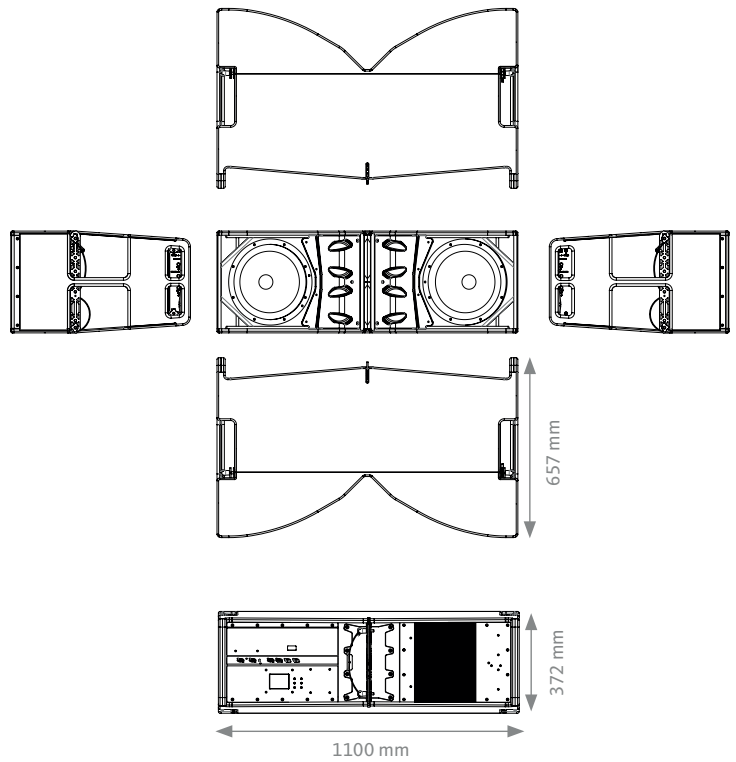


HORIZONTAL VERTICAL

DIRECTIVITY INDEX (DI)



CAD DRAWING SCHEME



CONTROL PANEL



X212AF

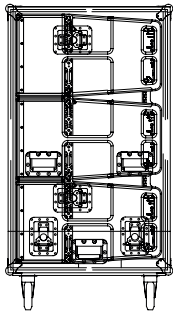
2x12" THREE-WAY ACTIVE LINE
ARRAY SPEAKER SYSTEM

XCELLENCE

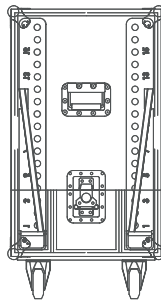


ACCESSORIES

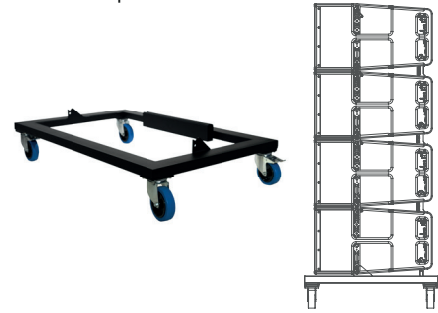
FLIGHT CASE FC-X212AF
For three units of X212AF



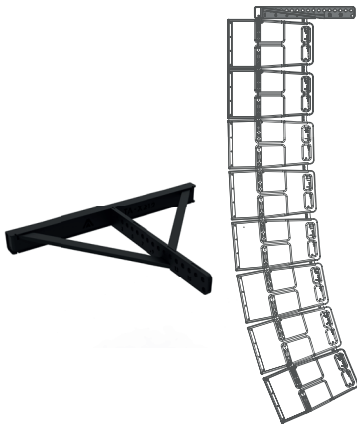
FLIGHT CASE FC-TAX212
For two units of TA-X212



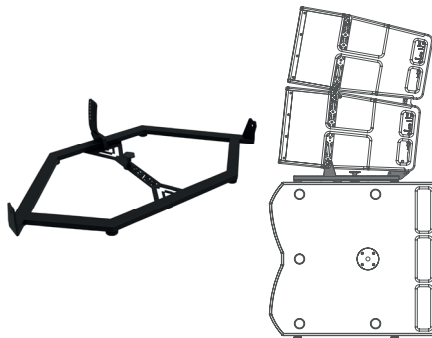
TROLLEY TR-X212
For four units of X212AF. Includes protection cover



TOURING BUMPER TA-X212
For flying of X212AF



STACKING FRAME FR-X212
For X212AF over X218WF



WIRELESS COMMUNICATION KIT CWK-D

Bespoke control protocol that supports Wi-Fi connectivity through CWK-D



DSP STUDIO CONTROL SOFTWARE



The application utilises a bespoke control protocol that supports Wi-Fi connectivity (control over IP).

It allows to address the ethernet-enabled amp and DSP modules in the Xcellence series cabinets, affording the user visual feedback on amplifier status and the ability to edit processor values from any spot in the venue.

You can edit parameters such as crossover frequency, gain (per way and separately mutable), limiter, polarity, delay, five custom parametric EQs or an array of filter shapes, can all be adjusted in fine detail, with several elements controllable at the same time using grouping functions.

The app also provides comprehensive information about input and output levels, heat-sink temperature, clip and protection indicators.

"Instant access to outstanding sound"

1

Configure your wifi network

2

Detect loudspeakers

3

Setup audio settings

4

Enjoy the best sound



iPad
VERSION



PC
VERSION

Download it from our website:
www.amateaudio.com