

X12CLA

12" ACTIVE CLUSTER
ARRAY SYSTEM

Xcellence



A true compact array. The X12CLA is a constant curvature array that combines ultra-compact form with astounding levels of performance. Light-weight, safe and easy to setup and carry, it performs far beyond expectations, thanks to a custom high frequency waveguide, advanced acoustic design and integrated 1500 W amplification with DSP.

KEY FEATURES

TRANSDUCER TECHNOLOGY

Two-way active constant curvature array speaker system composed by one 3.5-inch voice coil, neodymium magnet, 12" loudspeaker and one 2.5-inch titanium diaphragm neodymium driver coupled to a 100° x 15° exclusive high performance waveguide.

AMPLIFICATION

1500 W 3rd generation Class D built-in amplifier controlled by a dedicated DSP.

90% efficiency amplifier SMPS (switching mode power supply), allowing maximum power delivery with minimum consumption in an extremely low-weight and reduced size.

Rear connections and control panel with LCD screen to display the different settings, presets and adjustments done by the user. A capacitive keyboard guarantees the reliability of the system even under humidity and extreme weather conditions.

Exclusive and unique Overvoltage Protection which continuously monitors line voltage and instantly disconnects the system if the line voltage exceeds the maximum permissible level.

DSP & CONTROL

Internal DSP with all necessary signal processing (crossovers, EQs, delay, limiters, gain control, mute) as well as several useful presets to adjust X12CLA to different requirements.

Ethernet connection and full wireless control. The system can be monitored from any spot in the room.

DSPStudio® control software capable of adjusting and setting-up even the finest details and monitoring key parameters of the amplifier: input and output levels, clip limiter activation, amplifier temperature and network connection status.

DESIGN & ACCESSORIES

Several accessories allow easy flying. Inter-cabinet connection is set via lateral rigging bars, providing a 15° fixed angle between boxes.

Ergonomic handles for an easy and comfortable transport.

Baltic birch plywood cabinet with Polyurea® coating, offering maximum reliability and strength for touring as well as for high demanding applications.

X12CLA

12" ACTIVE CLUSTER ARRAY SYSTEM

Xcellence



DSP STUDIO CONTROL APP FOR IPAD & WINDOWS



WITH CWK-D



EXCLUSIVE HIGH PERFORMANCE WAVEGUIDE



ARRAY & CLUSTER APPLICATION



LIGHT NEODYMIUM COMPONENTS



> 250 V OVERVOLTAGE PROTECTION



MULTIPLE PRESETS AVAILABLE



HIGH RESISTANT POLYUREA® PAINT



ACCESSORIES FOR EASY INSTALLATIONS

TECHNICAL FEATURES

Amplifier (program power)	1000 W (LF) + 500 W (HF) – Class D Bi-amplified
Input sensitivity	8 dBu – 1.94 V
Input Impedance	20 kΩ Balanced
Mains	Universal Switch Mode Power Supply 85-265 V / 45-65 Hz
Average current draw	2.1 A (Heavy duty musical program)
SPL (1 m)	129 dB continuous, 132 dB peak
Built-in DSP	48 bit
AD/DA converters	24 bit – 96 kHz
Presets	Built-in presets to cover the most standard applications +23 configurable user memories
Crossover frequency	800 Hz
Frequency response (-10 dB)	58 Hz – 19 kHz
Components	LF HF
	12" neodymium woofer (3.5" voice coil) 2.5" titanium diaphragm neodymium driver
Directivity (HxV)	100° x 15°
Directivity factor (Q)	20
Directivity index (DI)	13 dB
Weight	31.5 kg
Dimensions (HxWxD)	352 x 640 / 680 (including ball lock pins) x 485 mm
Finish	Multilayer baltic birch plywood with high resistant black Polyurea® coating
Grille	1.5 mm steel with grey micro-foam cloth
Rigging	Stainless-steel integrated rigging bars
Connectors	1x XLR input / 1x XLR link / 1x AC PowerCon input / 1x AC PowerCon link / 1x EtherCon RJ45 input / 1x EtherCon RJ45 link



SIDE VIEW



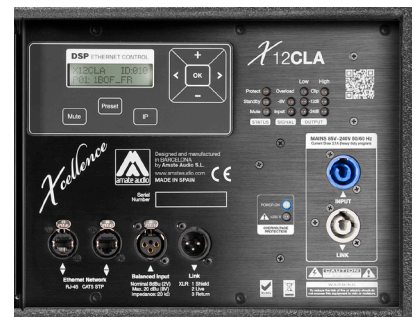
FRONTAL VIEW WITHOUT GRILLE



REAR VIEW



TOP VIEW



CONNECTION PANEL

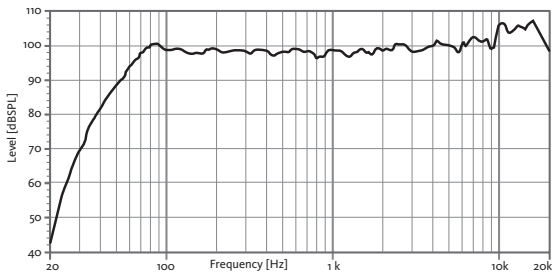
X12CLA

12" ACTIVE CLUSTER
ARRAY SYSTEM

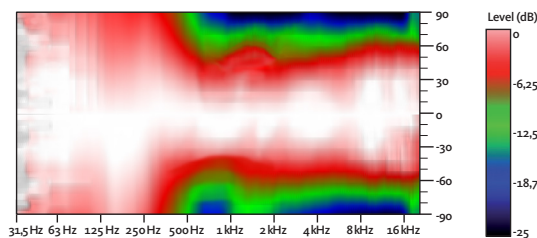
Xcellence



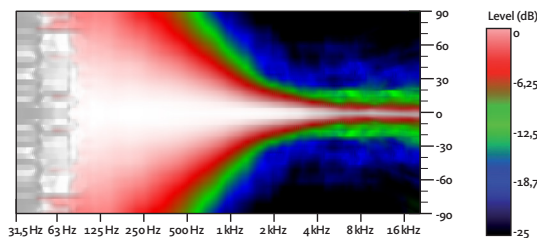
FREQUENCY RESPONSE 1w/1m (1BOX_FR PRESET) ONE CABINET



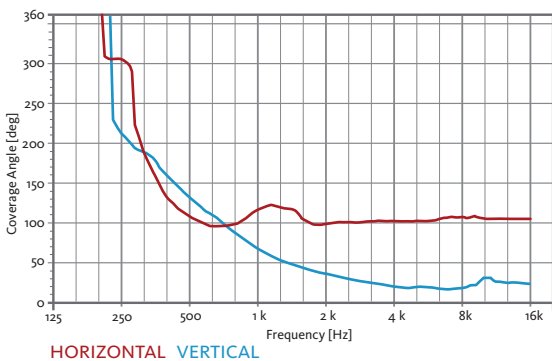
HORIZONTAL COVERAGE



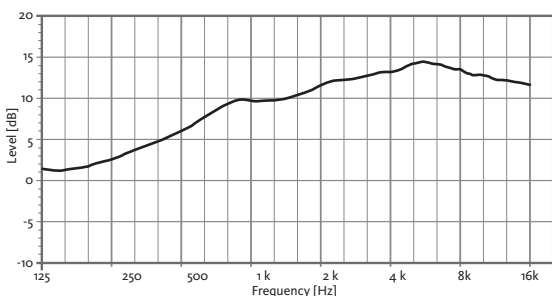
VERTICAL COVERAGE



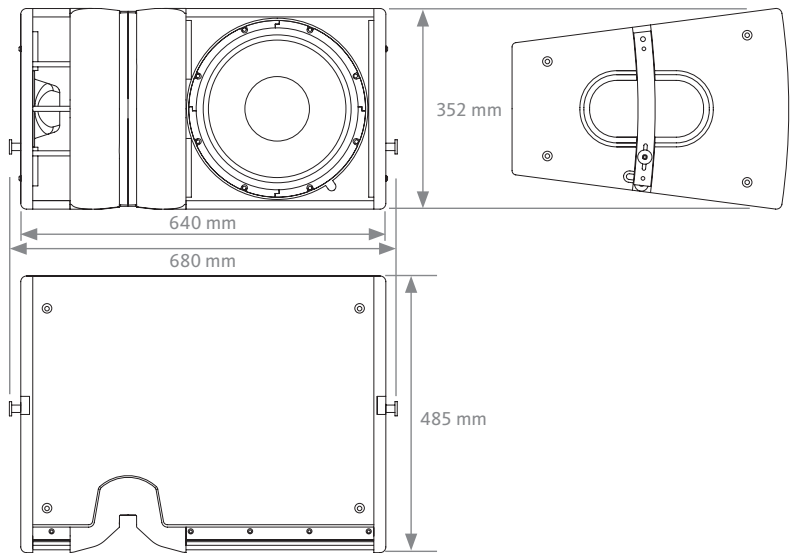
HORIZONTAL & VERTICAL BEAMWIDTH (-6dB point)



DIRECTIVITY INDEX (DI)



CAD DRAWING SCHEME



DSP STUDIO CONTROL SOFTWARE



- 1 Configure your wifi network
- 2 Detect loudspeakers
- 3 Setup audio settings
- 4 Enjoy the best sound

Once an X12CLA system is flown and in position, optimize the system performance with Amate Audio's DSP Studio® control software.

Parameters such as gain, limiter, polarity, delay and 5 custom parametric EQs can be managed via the software.

Several elements may be controlled at the same time using grouping functions. The software also gives comprehensive information about the amplifier status: input and output levels, heat-sink temperature, clip and protection indications.

DSP Studio® is available for PC and iPad.



Download it from our website: www.amateaudio.com

X12CLA

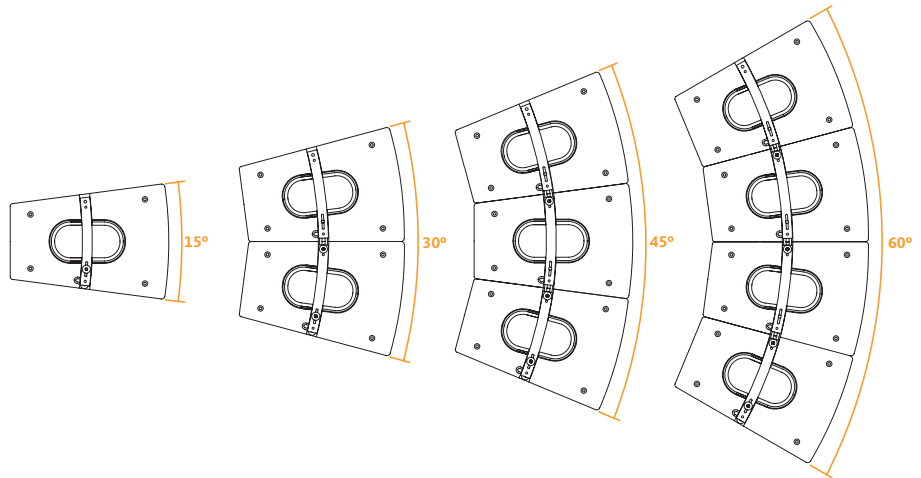
12" ACTIVE CLUSTER ARRAY SYSTEM

Xcellence



CONFIGURATION (MAXIMUM 4 CABINETS)

X12CLA provides extended versatility, by being deployable in either vertical array or horizontal point source cluster configurations; able to provide coverage with exact precision, dramatically reducing undesired reflections and frequency cancellations. Inter-cabinet connection is set via lateral rigging bars, providing a 15° fixed angle between boxes.



ACCESSORIES

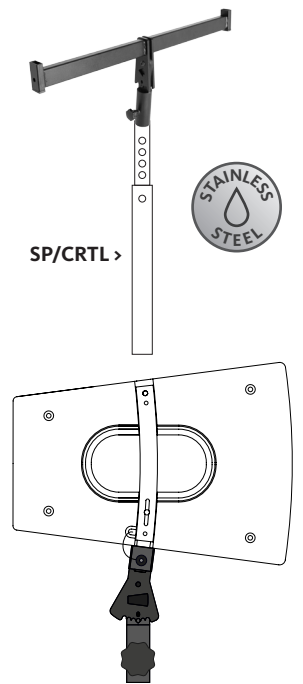
FLIGHT CASE FC-X12CL
For two units of X12CLA



STACKING FRAME FR-X12CL/18
For stacking X12CLA sobre X18T



POLE MOUNT ADAPTOR Ø 35 PA-X12CL



FRAME ADAPTOR FA-X12CL/18
For X12CLA under X18T



CLUSTER RIGGING CR-X12CL
For flying X12CLA



TOURING BUMPER TA-X12CL
For flying X12CLA



WIRELESS COMMUNICATION KIT CWK-D

Bespoke control protocol that supports Wi-Fi connectivity through CWK-D



M8 RIGGING EYEBOLT ACR-M8



DISTANCE ROD M20 SP-CRTL
Ø: 35 mm
Length: 55 cm ~ 90 cm
Thread: M20

