

MASK6CT-BL

6.5" design two-way loudspeaker
black with Clickmount system



The MASK6CT has a unique design and delivers a crystal clear sound for all your public address and background music applications. The MASK6CT can be used as a 70V/100V speaker with power tapping on 60 - 30 - 15 - 6 watts in 100V or as a low impedance 16 Ohm speaker. This results in a versatile speaker that can be used in any location and any application. The cabinet is made of high quality enforced PP4 ABS, with an aluminium grill. The design of the MASK6C ensures high quality and long lasting performance in indoor and outdoor use, even under extreme weather conditions. The MASK6CT has a powerful 6.5" coated paper cone woofer and a 1" silk dome tweeter which results in a high SPL and extremely low distortion.

This ensures an unprecedented clarity over the whole frequency spectrum. The built-in Apart 3-step protection and the high-quality components make the MASK6CT an ultra-reliable, fail safe loudspeaker even at high power loads. Thanks to the revolutionary design of the ClickMount bracket, the MASK6CT is without a doubt the fastest and most installer friendly loudspeaker to-date. The pre-defined clicks on the ClickMount ensure a perfect alignment for every loudspeaker. With the discrete cable management system, integrated spirit level and in/out connectors, the full cabling is done on the bracket. To complete the installation simply click the loudspeaker on the ClickMount!

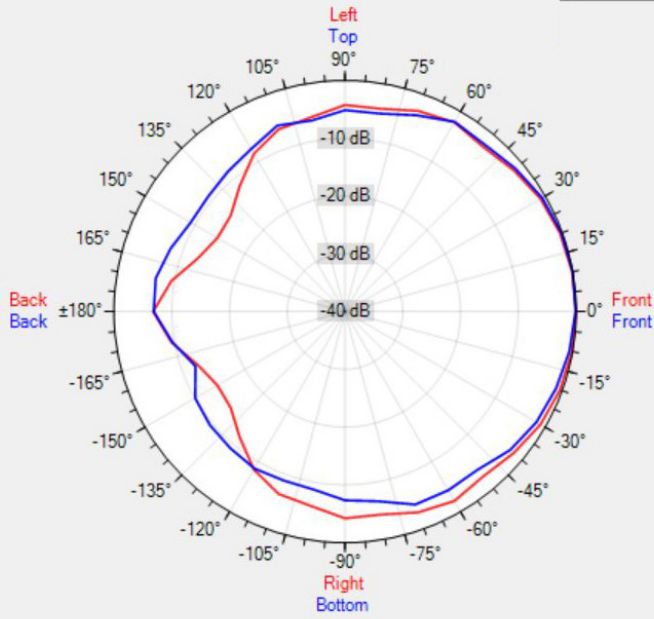
TECHNICAL SPECIFICATIONS

height in mm	328	width in mm	198
depth in mm	190	loudspeaker system	2-way
woofer size in inch	6,5	woofer cone material	coated paper
tweeter size in inch	1	mounting system	clickmount
100V transformer power taps in watts	60 - 30 - 15 - 6	70V transformer power taps in watts	60 - 30 - 15 - 7.5 - 3
impedance (ohms)	16	low impedance dynamic power in watts	200
low impedance RMS power in watts	150	SPL 1W/1m in dB	90
max SPL 1m in dB	110	frequency response in Hz	65 - 20k
main construction material	ABS plastic	grille main material	aluminium
IP rating		Horizontal dispersion angle 1000 Hz	180°
Vertical dispersion angle 1000 Hz	180°	closest RAL colour (subject to deviations)	RAL9016 (W) / RAL9011 (BL)
Net weight product (kg)	3.9		

POLAR PLOTS

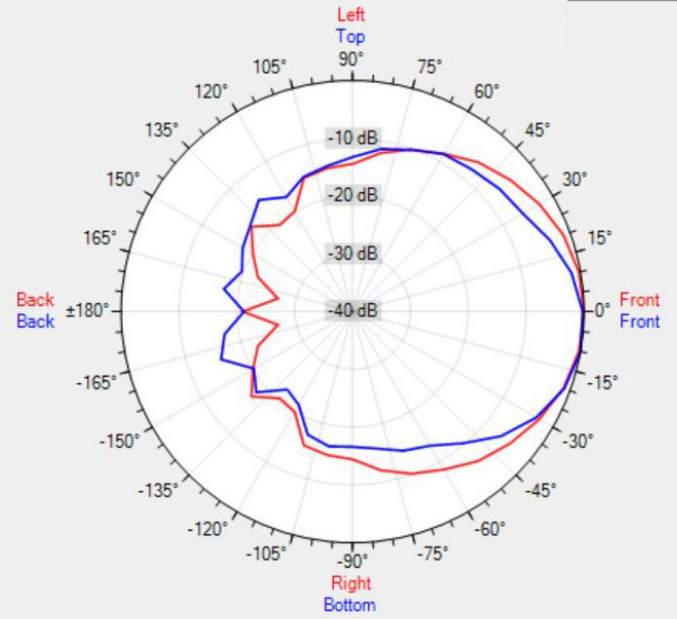
Data Shown: MASK6CT (Apart Audio)
Display Parameters: Frequency: 1000Hz (1/24th Octave)

Horizontal
Vertical



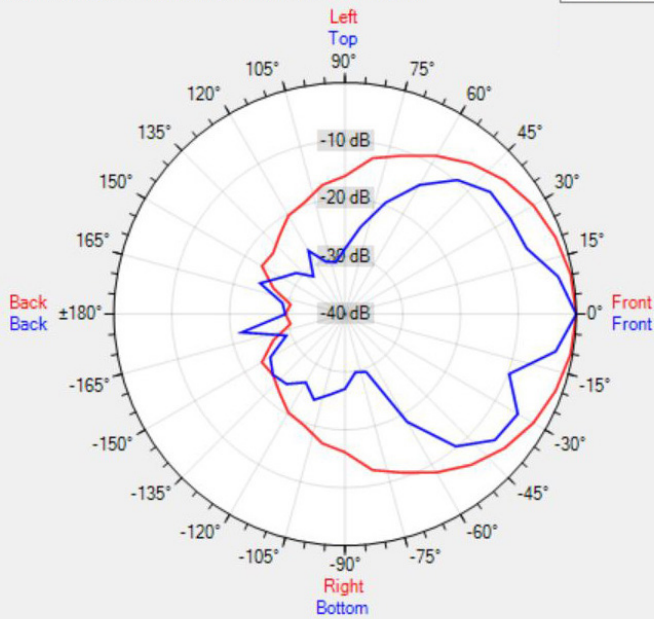
Data Shown: MASK6CT (Apart Audio)
Display Parameters: Frequency: 2000Hz (1/24th Octave)

Horizontal
Vertical



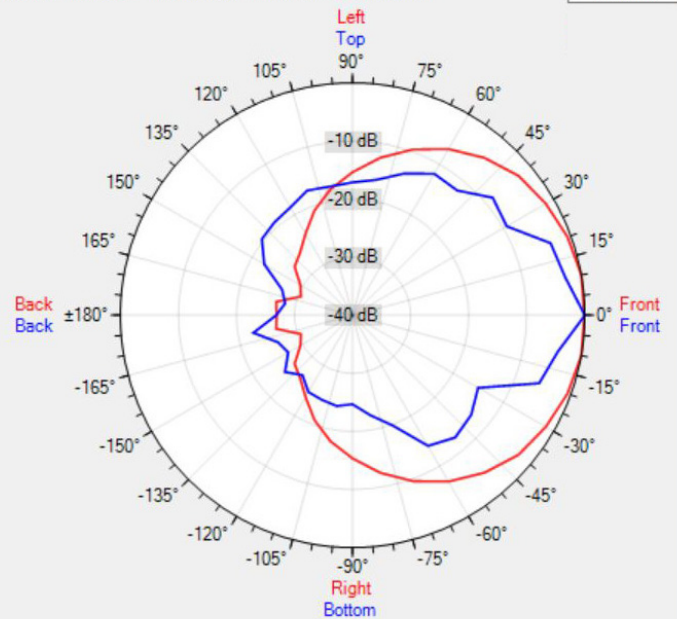
Data Shown: MASK6CT (Apart Audio)
Display Parameters: Frequency: 4000Hz (1/24th Octave)

Horizontal
Vertical

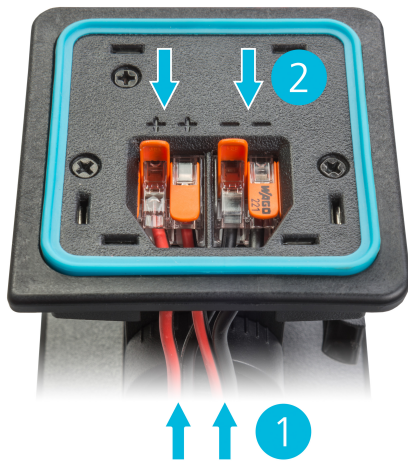


Data Shown: MASK6CT (Apart Audio)
Display Parameters: Frequency: 8000Hz (1/24th Octave)

Horizontal
Vertical

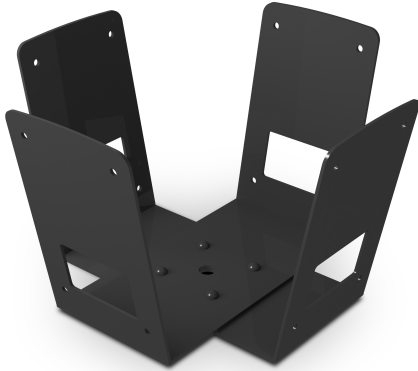


MORE PICTURES





ACCESSORIES



MASKCW-BL

Double V-shaped cluster bracket for MASK4C(T)-BL/MASK6C(T)-B



MASKCV-BL

V-shaped 2-way cluster bracket for MASK4C(T)-BL/MASK6C(T)-BL



MASKCL-BL

L-shaped side bracket for MASK4C(T)-BL / MASK6C(T)-BL