



Breakthrough technologies, cutting-edge acoustic design, the highest quality, precision-engineered, customised components and materials – X210 is the flagship of the Xcellence series and the epitome of audio perfection. What are you waiting for?...

KEY FEATURES

TRANSDUCER TECHNOLOGY

Two-way line array active speaker system composed by two 2.5-inch voice coil, neodymium magnet, 10" loudspeakers and three 1.75-inch PEN diaphragm neodymium drivers coupled to a 120° x 7° exclusive high performance waveguide.

AMPLIFICATION

Each X210 line array system is constructed in multiples of two modules: one active unit X210A, which includes the amplification and the digital signal processor (DSP) and one passive unit X210P, which is driven by the X210A.

3rd generation Class D built-in amplifier with a total power of 3000 W, controlled by a dedicated DSP.

90% efficiency amplifier SMPS (switching mode power supply), allowing maximum power delivery with minimum consumption in an extremely low-weight and reduced size.

Rear connections and control panel with LCD screen to display the different settings, presets and adjustments done by the user. A capacitive keyboard guarantees the reliability of the system even under humidity and extreme weather conditions.

Exclusive and unique Overvoltage Protection which continuously monitors line voltage and instantly disconnects the system if the line voltage exceeds the maximum permissible level.

DSP & CONTROL

Internal DSP with all necessary signal processing (crossovers, EQs, delay, limiters, gain control, mute) as well as several useful presets to adjust X210 to different requirements.

Ethernet connection and full wireless control. The system can be monitored from any spot in the room.

DSPStudio® control software capable of adjusting and setting-up even the finest details and monitoring key parameters of the amplifier: input and output levels, clip limiter activation, amplifier temperature and network connection status.

DESIGN & ACCESSORIES

Several accessories allow easy flying. Inter-cabinet connection is set via front-mounted fix linking plates and angles are set via rear-mounted adjustable plates.

Ergonomic handles for an easy and comfortable transport.

Baltic birch plywood cabinet with Polyurea® coating, offering maximum reliability and strength for touring as well as for high demanding applications.

X210

2x 10" LINE ARRAY SYSTEM

Xcellence



DSP STUDIO CONTROL APP FOR IPAD & WINDOWS



WITH CWK-D



EXCLUSIVE HIGH PERFORMANCE WAVEGUIDE



LIGHT NEODYMIUM COMPONENTS



> 250 V OVERVOLTAGE PROTECTION



MULTIPLE PRESETS AVAILABLE



HIGH RESISTANT POLYUREA® PAINT



ACCESSORIES FOR EASY INSTALLATIONS

TECHNICAL FEATURES

Amplifier (program power)	2400 W (LF) + 600 W (HF) – Class D Bi-amplified				
Input sensitivity	8 dBu – 1.94 V				
Input Impedance	20 kΩ Balanced				
Mains	Universal Switch Mode Power Supply 85-265 V / 45-65 Hz				
Average current draw	3.8 A (Heavy duty musical program)				
SPL (1 m)	134 dB continuous, 137 dB peak				
Built-in DSP	48 bit				
AD/DA converters	24 bit – 96 kHz				
Presets	LFXTEAD / COMPACT / NEARFLD / LONGTHRW / STACK2 + 23 configurable user memories				
Crossover frequency	1k1Hz				
Frequency response (-10 dB)	70 Hz – 18 kHz				
Components	<table border="0"> <tr> <td>LF</td> <td>2x 10" neodymium woofers (2.5" voice coil)</td> </tr> <tr> <td>HF</td> <td>3x 1.75" PEN diaphragm neodymium drivers</td> </tr> </table>	LF	2x 10" neodymium woofers (2.5" voice coil)	HF	3x 1.75" PEN diaphragm neodymium drivers
LF	2x 10" neodymium woofers (2.5" voice coil)				
HF	3x 1.75" PEN diaphragm neodymium drivers				
Directivity (HxV)	120° x 7°				
Directivity factor (Q)	64				
Directivity index (DI)	18 dB				
Weight	37 kg (X210A) / 33 kg (X210P)				
Dimensions (HxWxD)	314 x 764 x 574 mm				
Finish	Multilayer baltic birch plywood with high resistant black Polyurea® coating				
Grille	1.5 mm steel with grey micro-foam cloth				
Rigging	Stainless-steel integrated rigging bars				
Connectors	1x XLR input / 1x XLR link / 1x AC PowerCon input / 1x AC PowerCon link / 1x EtherCon RJ45 input / 1x EtherCon RJ45 link				



SIDE VIEW



FRONTAL VIEW WITHOUT GRILLE



TOP VIEW



REAR VIEW

X210 SET (1x X210P + 1x X210A)

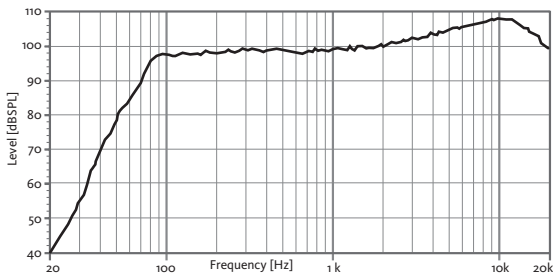
X210

2x 10" LINE ARRAY SYSTEM

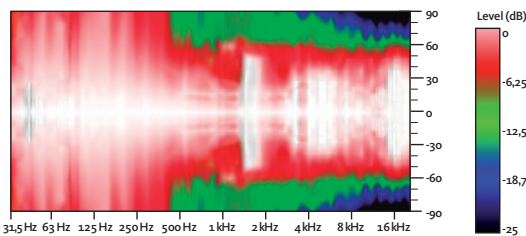
Xcellence



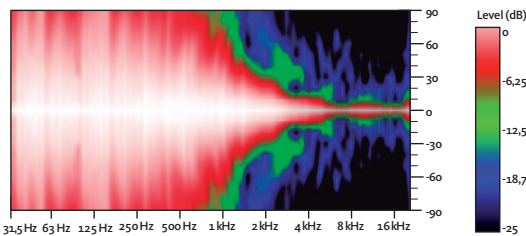
FREQUENCY RESPONSE 1W/1m (LFXTEND PRESET) ONE CABINET



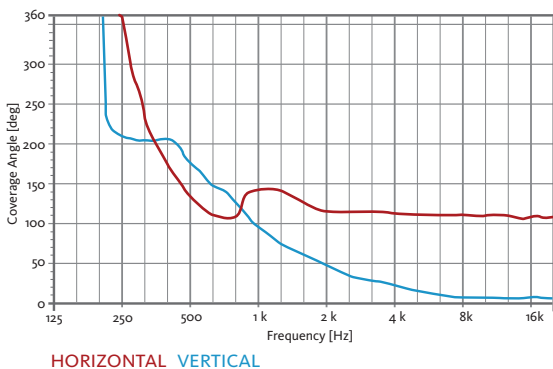
HORIZONTAL COVERAGE



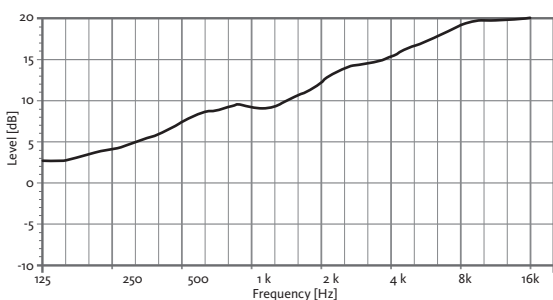
VERTICAL COVERAGE



HORIZONTAL & VERTICAL BEAMWIDTH (-6dB point)

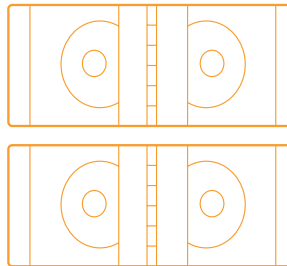


DIRECTIVITY INDEX (DI)



X210 SET

1x X210P (passive)
1x X210A (active)



X210P
+
X210A



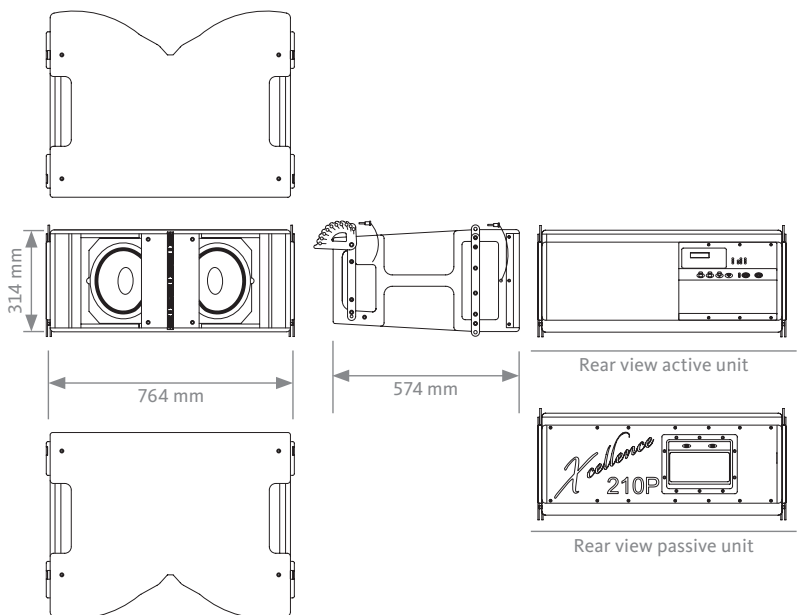
X210A ACTIVE MODEL



X210P PASSIVE MODEL

CONNECTION PANEL

CAD DRAWING SCHEME



X210

2x 10" LINE ARRAY SYSTEM

Xcellence

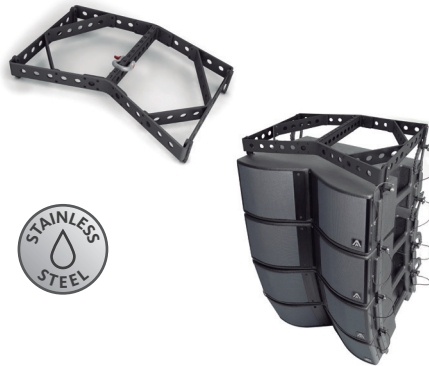


ACCESSORIES

FLIGHT CASE FC-X210
For four units of X210



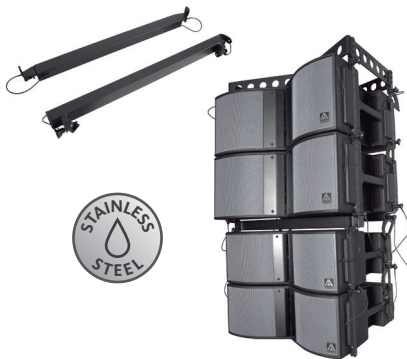
TOURING BUMPER TA-X210R
For flying X210



STACKING FRAME FR-X210
For X210 over X218W3K



FRAME ADAPTOR FA-X208/210
For X208 underneath X210



STACKING KIT ST-X215
For X210 over X215W



WIRELESS COMMUNICATION KIT CWK-D
Bespoke control protocol that supports Wi-Fi connectivity through CWK-D



DSP STUDIO CONTROL SOFTWARE



The application utilises a bespoke control protocol that supports Wi-Fi connectivity (control over IP).

It allows to address the ethernet-enabled amp and DSP modules in the Xcellence series cabinets, affording the user visual feedback on amplifier status and the ability to edit processor values from any spot in the venue.

You can edit parameters such as crossover frequency, gain (per way and separately mutable), limiter, polarity, delay, five custom parametric EQs or an array of filter shapes, can all be adjusted in fine detail, with several elements controllable at the same time using grouping functions.

The app also provides comprehensive information about input and output levels, heat-sink temperature, clip and protection indicators.

"Instant access to outstanding sound"

1

Configure your wifi network

2

Detect loudspeakers

3

Setup audio settings

4

Enjoy the best sound



iPad VERSION



PC VERSION

Download it from our website: www.amateaudio.com